

# COMMERCIAL AREA

31/05/2017

Interporto Toscano Amerigo Vespucci, center of the Tuscany's port system is equipped with infrastructures services for logistics operating since the early 2000's to satisfy important requests from Italian and foreign operators.

The intermodal is one of the largest logistic areas, located in close communication with the Port of Livorno (5km) which is directly connected to main roads and has a dedicated railway line.



The intermodal is one of the largest logistic areas, located in close communication with the Port of Livorno (5km) which is directly connected to main roads and has a dedicated railway line.

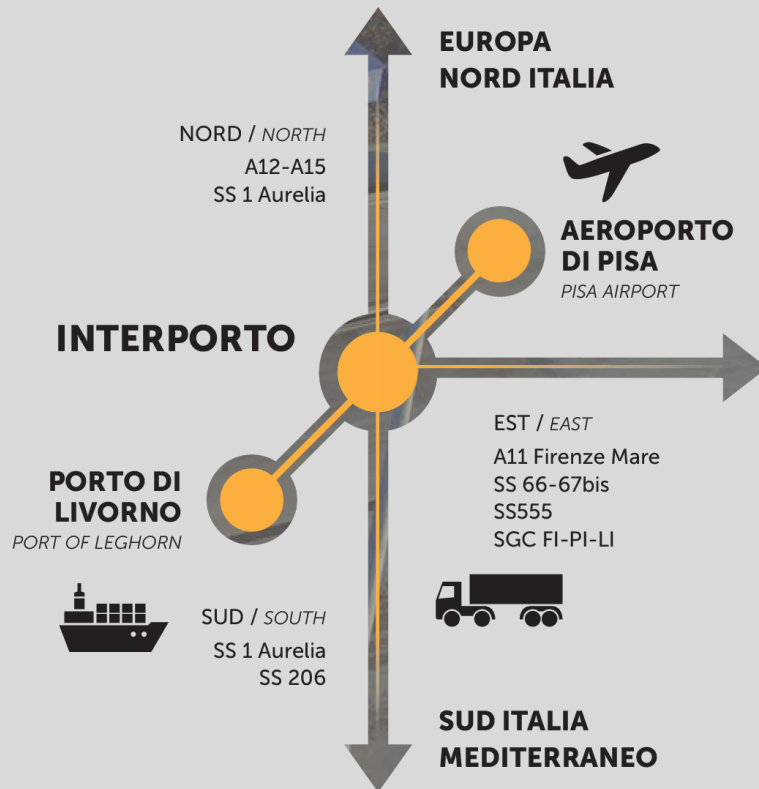
The Intermodal also has a strong constant attitude with innovations and timing, or caring for most demanding customers, is founded on sustainability and intermodality activities. The main ones are:

- **Commercial management** of services and development of interportual infrastructures
- **Real estate** of development areas
- The **term management** of sea motorways and refrigerated storehouses
- Participation to **innovation and announces development**

# Key opportunities

The Interport Amerigo Vespucci is a logistic platform able to integrate, modern structures and vanguard technologies with all the transport modes: trucks, ships, trains.

A complex of quality in constant evolution to satisfy all combined needs transporting goods, connected directly to the national railway and highway line, as well as to a world valence port, such as the multipurpose Livorno port.



- *Strategic position in close connection with the Port of Livorno*
- *Area directly connected to the main infrastructure*
- *immediate start of works thanks to builders tool made available by the submitting authority the Collesalveti town council*
- *buildables area*
- *safe area and highly urbanized*

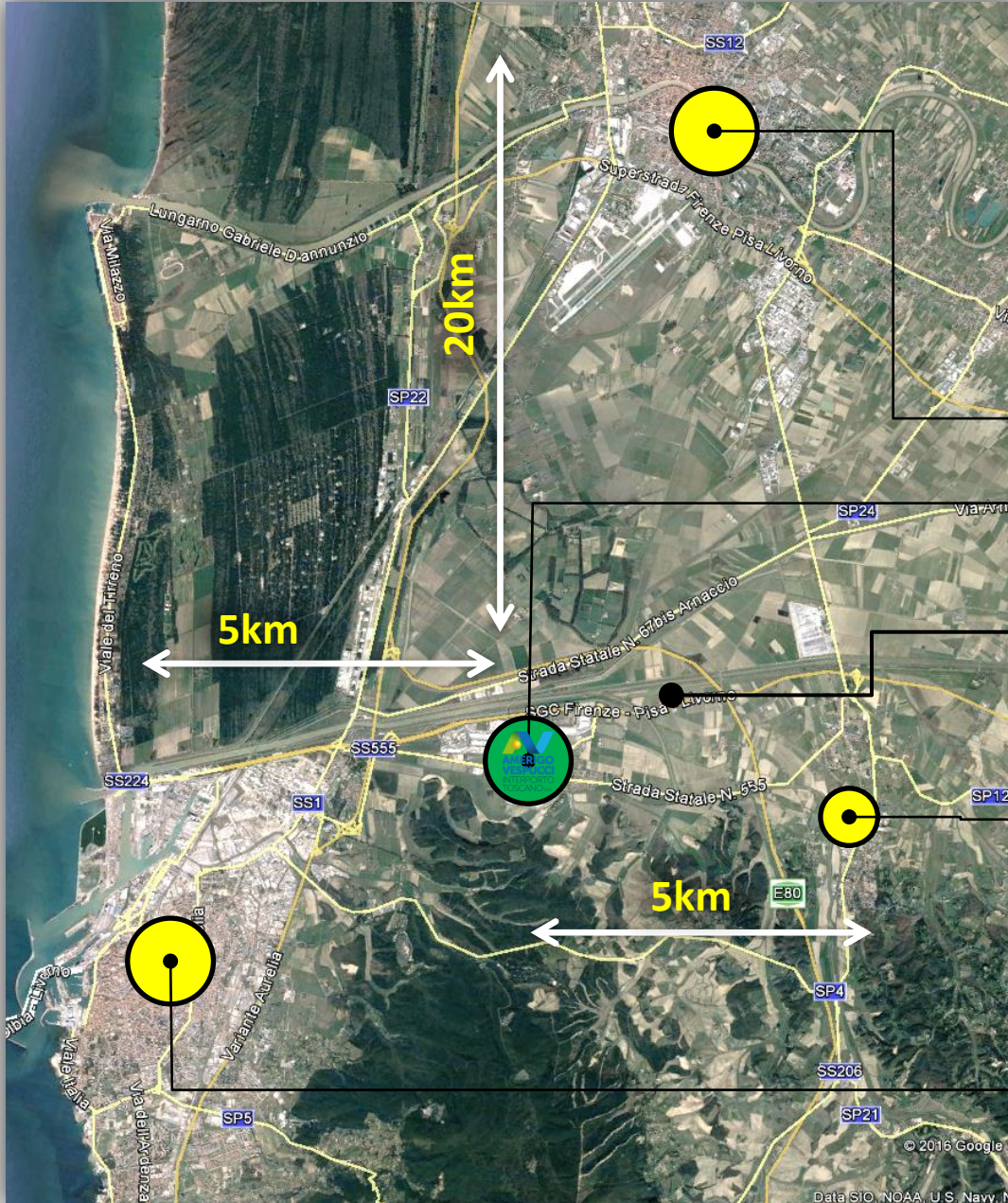




**AREA F**

commercial area

**CONNECTIONS**



AREA F  
main road

**PISA** 91.000 inhabitant

**INTERPORTO** AREA F 

**MAIN FLORENCE-PISA-LIVORNO ROAD,**

**COLLESALVETTI** 17.000 inhabitant

**LIVORNO** 160.000 inhabitant

An area included in the freight terminal complex, served by two dedicated junctions on the main florence-pisa-livorno road, close to the motorway exits.

